



Bemidji State University

Academy of Lifelong Learning Newsletter

Volume 9 Issue 1

Spring 2010

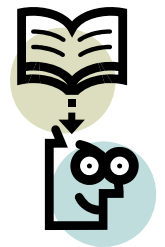
5 GREAT REASONS TO ATTEND ALL EVENTS



1) Take care of your brain: Research has shown that keeping your mind active can be a great way to ward off memory loss and keep mental faculties sharp. Stretch your mind and consider the meaning of a classic story through a new lens—attend the April 27 talk by Art Lee and learn about the Wizard of Oz from a new perspective. A great strength of lifelong learning is the opportunity it provides to re-evaluate familiar topics (the things we *think* we know), as well as explore topics that are new to us. What do you know about regional Canadian history or the Louis Riel Rebellion? Join BSU Associate Professor Dr. Tom Beech on March 16 for a great presentation covering these intriguing topics. Exercise your mind and keep it fit!

2) Appreciate your talented neighbors: Have you ever been to Russia? Probably not, but if you attend Alice Thompson's April 13 presentation on the Open World Medical Exchange Program, you will probably learn something new about that country and about the nursing education cultural exchange that has taken place here in Bemidji. Or come on April 6 and learn from John Weber, passionate citizen scientist, about our region's butterflies. These fascinating organisms play a multifaceted role spanning from scientific importance to cultural influence. Enjoy his lush photographs and deepen your appreciation for these beautiful creatures—as well as for the impressive expertise of your fellow community members.

3) Keep your mind open: Engaging in lifelong learning is taking a chance to listen, discuss, grow, and challenge yourself to learn about a topic that you don't (yet!) know much about. For example, while our region is widely known for the headwaters of the Mississippi River, if you attend Dr. Steve Hoffbeck's talk on March 23, you may learn something about the somewhat lesser known exploits of Giacomo Beltrami and evaluate his contributions to Minnesota history in a new light. Another option is to attending the March 9 presentation by Jim Jones, Minnesota Indian Affairs Council Cultural Resources Director, on historical and current Native American burial practices in Minnesota. You may surprise yourself with the knowledge you gain!



4) Enhance your self esteem: Acquire new facts and experiences to share. Have you ever wondered why having a local symphony orchestra matters to Bemidji? Attend Bemidji Symphony Music Director Beverly Everett's talk on March 2 and gain new insights about the contributions this institution makes to the life of the community. Or, satisfy your intellectual curiosity by attending the March 30 presentation by police officers Jon Hunt and Willie Beise. Learn about connections between gangs and drugs as well as the effects of such activities on our community. Take pride in learning new things and being an informed, engaged community member!



5) Make friends and have fun: Attending ALL events provides a chance to visit with old friends and make new ones! Come on April 20 and experience "Living History" with a presentation by Janet Rith-Najarian about Mary Gibbs and her role in defining Itasca State Park. Participate in discussion with other attendees and build community through your shared learning experience. This presentation is a great embodiment of the multiple strengths of ALL presentations: educational, enjoyable, relevant, and dynamic! Come to ALL events and connect with speakers and topics that make our community and the world beyond come alive.

SAVE THE DATE: Statewide Meeting October 14-15, 2010

Planning Committee Chair Betty Magnan reminds ALL participants that the statewide lifelong learning meeting will take place in Bemidji this fall! Hosts will be ALL Bemidji, NELL Bagley, NCLL Park Rapids. The Conference will begin with an evening reception on October 14 at the BSU Alumni David Park House and continue with group sessions on Friday at the Center for Research and Innovation. More information will be available as these dates approach.



Academy of Lifelong Learning Spring 2010 Schedule

All meetings will be held 10:00-11:30 a.m.

BSU Center for Research and Innovation

3801 Bemidji Avenue North, Suite 4

For additional information, contact the CRI.

Phone: 218-755-4900, Email: cri@bemidjistate.edu

Tuesday, March 2: An Orchestra's Effect on its Community

Beverly Everett, Music Director, Bemidji and Bismarck Mandan Symphony Orchestras

Recognized by the American Symphony Orchestra League as "clearly among the most promising talent in our field," Everett engages large audiences and solid community support. Since her arrival, her orchestras have seen an enormous increase in concert attendance and an overall positive "buzz." The increased popularity of both orchestras is a result of Everett's exciting programming and ability to create event-based concerts that reach a wider audience base. Everett holds degrees in organ and conducting from Baylor University and from the University of Iowa, where she earned a Doctorate of Musical Arts in 2001. Her presentation to ALL will focus on the enriching effect of an orchestra on its community.

Tuesday, March 9: Native Burial Practices within Minnesota: Then and Now

Jim L. Jones, Jr., Cultural Resource Specialist, Minnesota Indian Affairs Council

Jim Jones has worked in cultural resource management since 1986. He joined the Minnesota Indian Affairs Council in 1995 where he oversees the protection of American Indian Burial and Cemetery sites across the state. He is an enrolled member of the Minnesota Chippewa Tribe under the Leech Lake Band of Ojibwe. Mr. Jones is a proud father, an avid outdoorsman, and enjoys making pottery, traditional crafts, and canoes. He will give general overviews of American Indian burial practices from ancient burial sites and include some comparison with burial practices today. Mr. Jones will share examples of research that has taken place within the last couple of years. **This presentation is sponsored, in part, by Beltrami Electric Cooperative.**

Tuesday, March 16: Regional Canadian History, the Hudson Bay Company, Louis Riel, and the Metis

Tom Beech, Associate Professor of Political Science, Bemidji State University

Tom Beech is a graduate of the University of Manitoba and received his doctorate from Pennsylvania State University. He has been a member of the BSU Political Science Department since 1999, where he is a popular professor. He teaches classes in international relations, comparative politics, European and Canadian politics, American foreign policy, as well as media and money in American politics. His presentation to ALL will focus on the Hudson Bay Company and the role that it played in the development of Western Canada. Also, he will discuss the impact of European settlement on the Metis and the Red River and Northwest Rebellions.

Tuesday, March 23: Questions about the Physical Origins of the Mississippi River

Dr. Steve Hoffbeck, Professor of History, Minnesota State University Moorhead

Dr. Hoffbeck will present information about various quests to find the true sources of the 'Mighty Mississippi,' including an outline of the supposed sources and a practical look at the geography of the Continental Divide. Some attention will be given to the exploits of Giacomo Beltrami, the Italian explorer, and his claims about the river's sources. Beltrami's contributions to the history of Minnesota will be evaluated in a new light. Dr. Hoffbeck grew up on a dairy farm and has written two books, *The Haymakers: A Chronicle of Five Farm Families* and *Swinging For The Fences: Black Baseball in Minnesota*. **This presentation is sponsored by Bemidji Appraisal Service.**

Tuesday, March 30: Gangs and Drugs Task Force in Bemidji Area

Jon Hunt, DARE and School Resource Officer, Bemidji Middle School, and Willy Beise, Safe Trails Drug Task Force

This team-taught presentation will explore the correlation between drugs and gangs and what gang activity may be present in our community. Presenters will discuss how this activity affects our community's children and what effect it has on schools and families. Jon Hunt is a 24-year veteran of the Bemidji Police Department. Currently he works with crime prevention, crisis issues, threat assessment, workplace safety, and investigations that involve children who are accused of or are victims of crimes. Willy Beise is 10-plus year veteran of the Bemidji Police Department who is currently the gang prevention and investigations specialist on the Safe Trails Drug Task Force.

"True, a little learning is a dangerous thing, but it still beats total ignorance." Abigail Van Buren

Tuesday, April 6: An Inspiration of Butterflies

John Weber, Citizen Scientist, assisted by his wife Marlene

An astute observer and recorder of butterfly species, behaviors, lifecycles, and migration, John Weber will present on the scientific, artistic, poetic, and literary richness that butterflies share with humanity. Drawing from almost 20 years of detailed personal observation and documentation, he will describe the total metamorphosis undergone by butterflies over the course of their lifecycles. He will also discuss the butterfly species local observers may encounter in our rich regional convergence of ecosystems and watershed areas. In addition, John will share numerous full-color slides that demonstrate the beauty and variety of local butterfly species. **This presentation is sponsored, in part, by Bemidji Dairy Queen.**

Tuesday, April 13: Open World—Russian Medical Exchange Program

Alice Thompson, Community Coordinator, Open World Exchange Program

Open World’s mission is to improve understanding and cooperation between the US and Eurasian and Baltic states “by developing a network of leaders in the region who have gained significant, firsthand exposure to America’s democratic, accountable government and its free-market system.” Over 14,000 people have participated in Open World Programs and learned about business, civic, home, and community life in the US. Presenter and BSU grad, Alice Thompson has worked as a registered nurse as well as taught nursing. After 34 years in nursing education, Alice retired in 2004 and is presently the community coordinator for the Open World Exchange Program in Bemidji.

Tuesday, April 20: Mary Gibbs: Defining Itasca

Janet Rith-Najarian, Teacher-Consultant, Minnesota Alliance for Geographic Education

Itasca State Park was the second state park designated in the US. Mary Gibbs, its third commissioner, was the first woman to serve as director and park manager for a state or national park, blazing a trail that few women have followed since that time. This presentation will be a "Living History" re-enactment of the life and work of Mary Gibbs, including how the park was established, and the difficulty involved in trying to determine and map the headwaters region. The presentation will be given by Janet Rith-Najarian, who has a Master’s and PhD degree in environmental science and geography and serves on the board of directors for the Beltrami County Historical Society. She is also on the production crew for Lakeland Public TV.

Tuesday, April 27: The Wizard of Oz (A Parable on Populism)

Art Lee , Professor of History (retired), Bemidji State University

Before retiring in 1995, Art Lee was twice chosen as the Outstanding Lecturer of the Year. His major area of interest was the turn-of-the-20th century US. These days, the word Populist has become so difficult to define that it’s unclear if the label is a compliment or a criticism. Major Populist events in US history began with formation of the Populist Party in 1892, a political party made up primarily of northern plains and southern farmers. One who lived among this fervent Populism (in Aberdeen, SD—not Kansas!) was L. Frank Baum, who wrote *The Wonderful Wizard of Oz* in 1900. As he saw it, the Land of Oz was (is?) Washington, DC, and the Great Oz was the President, the Scarecrow represented farmers, and the Munchkins? Have you ever felt like a Munchkin?

THANK YOU TO OUR GENEROUS SUPPORTERS !

FRIENDS

Richard C. Lueben
 Frances G. Kiefer
 Ardith A. Kolstad
 Florence W. Tesar
 Patricia M. Upton
 Margaret L. Griebel
 Gerald H. Maertens
 Richard Skoe
 Jacquelyn C. Star

CONTRIBUTORS

Dorothy M. Jorgensen
 DuWayne Syverson
 Lawrence A. Krantz
 Elizabeth Hanson-Lehman

PARTNERS

Ruth A. Howe
 Earl Ockenga
 Ernest A. Rall

SUSTAINERS

Lynne K. Holt

BENEFACTORS

Eleanor J. Christensen
 Louis V. Marchand
 Calvin C. Rice
 Elaine J. Hazard



Additional thanks to the ALL Advisory Board!

Officers

Ernie Rall, Chair
 Sharon Fruetel, Vice Chair
 Betty Hanson-Lehman, Secretary

Members

Jim Brewer, Nancy Brovold, Lois Jenkins, Betty Magnostan, Scotty Tesar

“Man’s mind, once stretched by a new idea, never regains its original dimensions.” Oliver Wendell Holmes

Return Service Requested
Bemidji, MN 56601
1500 Birchmont Dr. NE
Center for Research and Innovation # 32
Bemidji State University

YES! I WOULD LIKE TO SUPPORT ALL!

Enclosed is my Annual gift:

<input type="checkbox"/> Friend \$20	<input type="checkbox"/> Contributor \$35	<input type="checkbox"/> Partner \$50	<input type="checkbox"/> Sustainer \$75	<input type="checkbox"/> Benefactor \$100
---	--	--	--	--

NAME _____

ADDRESS _____

CITY _____ STATE _____ ZIP _____ PHONE _____

EMAIL _____



Please make checks payable to **Bemidji State University Foundation**
Mail to: Academy of Lifelong Learning, c/o BSU Foundation, #17
1500 Birchmont Dr. NE, Bemidji, MN 56601

I would like my donation to be listed as anonymous.